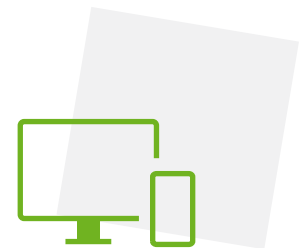




UPSKILL YOUR WORKFORCE THE WAY YOU WANT WITH THE POWER AND FLEXIBILITY TO DELIVER TRANSFORMATIONAL LEARNING

You need engaged, skilled employees. But when it comes to training, many of us are left making unnecessary compromises with rigid, overpriced and inflexible learning management systems.

Trusted by millions of learners worldwide, Totara Learn is a transformational, cost-effective learning management system (LMS) that replaces the limitations of the traditional LMS with an adaptable and extendable solution to meet your specific learning needs.



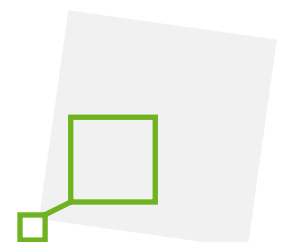
LEARN YOUR WAY

whenever and wherever you want



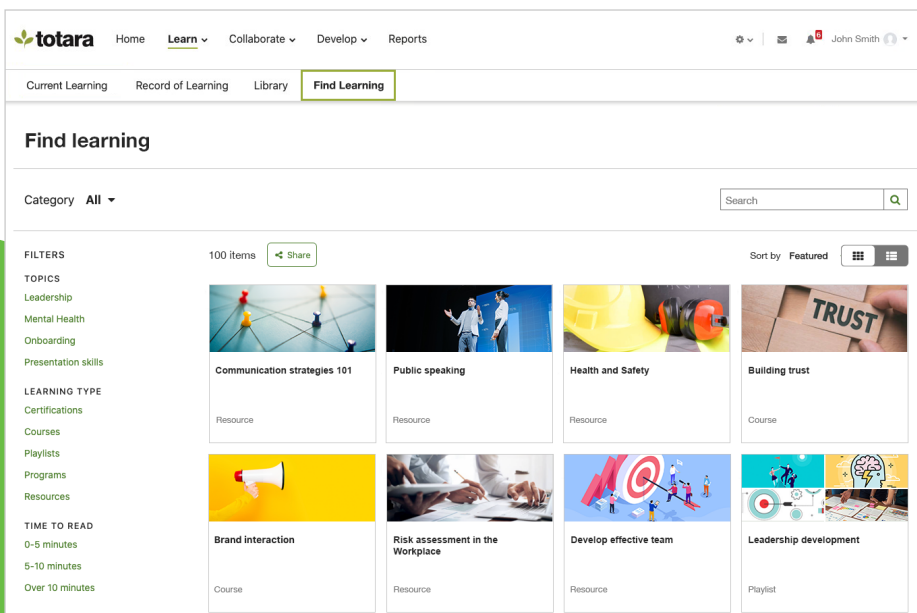
UPSKILL YOUR PEOPLE

with powerful blended and collaborative learning tools



TRANSFORM YOUR LEARNING

to meet the needs of your enterprise



The screenshot displays the 'Find Learning' page in the Totara Learn system. At the top, there is a navigation bar with 'Home', 'Learn', 'Collaborate', 'Develop', and 'Reports'. Below this, a breadcrumb trail shows 'Current Learning', 'Record of Learning', 'Library', and 'Find Learning'. The main heading is 'Find learning'. There is a search bar and a category dropdown set to 'All'. On the left, there are filter sections for 'TOPICS' (Leadership, Mental Health, Onboarding, Presentation skills) and 'LEARNING TYPE' (Certifications, Courses, Playlists, Programs, Resources). Below the filters, there are 100 items listed, with a 'Share' button. The items are displayed in a grid with images and titles: 'Communication strategies 101' (Resource), 'Public speaking' (Resource), 'Health and Safety' (Resource), 'Building trust' (Course), 'Brand interaction' (Course), 'Risk assessment in the Workplace' (Resource), 'Develop effective team' (Resource), and 'Leadership development' (Playlist). The interface also includes a 'Sort by' dropdown set to 'Featured' and a view toggle for grid/list.



A LEARNING SUITE WITH ALL THE TOOLS YOU NEED FOR TRANSFORMATIONAL LEARNING



AUDIENCE AND AUTOMATION

allow you to automatically assign learning to groups that are categorized by role, team, skills and more.



COMPLIANCE AND TRAINING MANAGEMENT

ensure compliance to improve safety and security while reducing business risks.



LIVE EVENTS AND SEMINARS

support online and offline learning events, empowering learners to collaborate and solve problems with centrally organized blended learning.



AN ENHANCED CUSTOM REPORT BUILDER

delivers information that matters to you. Track progress and completion of learning activities, and send automatic email notifications to stakeholders.



MULTITENANCY AND EXTENDED ENTERPRISE DELIVERY

enable you to cater to multiple groups or customers from a single instance of your LMS. Streamline the admin experience with branded and isolated user environments.



OAUTH2 SINGLE SIGN-ON

supports easy access to learning with users' Microsoft, Google or Facebook credentials, helping to lower technical barriers to learning.



CUSTOM THEMING AND BRANDING

for a seamless, instantly recognizable user experience across your LMS.



COURSE MANAGEMENT

gives you maximum flexibility and control over the course setup and delivery process. Target the right learners with relevant content, at the right time.



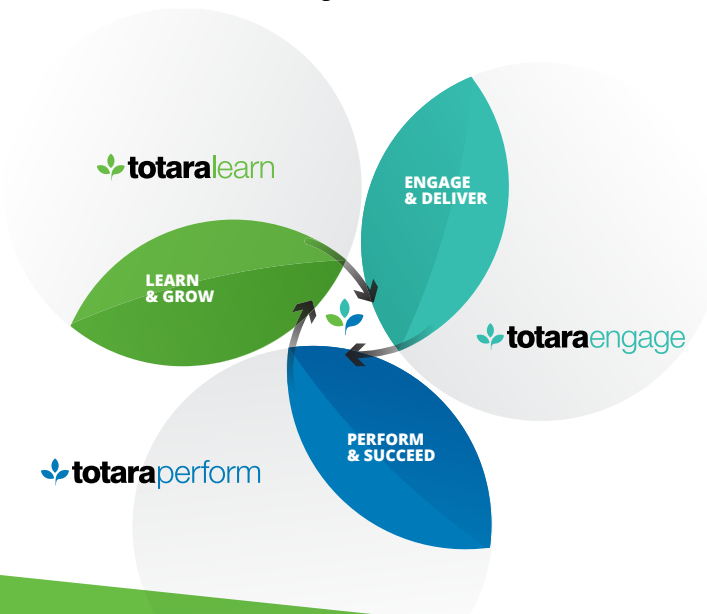
ASSESSMENTS AND CERTIFICATIONS

prove compliance and evidence course completion for effective compliance reporting.



MOBILE TRAINING APP

to deliver training on the go to improve completion rates with convenient learning.



ACCESS YOUR ALL-IN-ONE PRODUCTIVITY SUITE, WITH JUST A FEW CLICKS

Combine Totara Learn with Totara Engage and Totara Perform, with just a few clicks, to benefit from an integrated Talent Experience Platform that empowers your people to perform at their best.

Schedule a personalized demo or visit us on www.totaralearning.com